



EQUITY SAVING PLAN

User Guide for Android

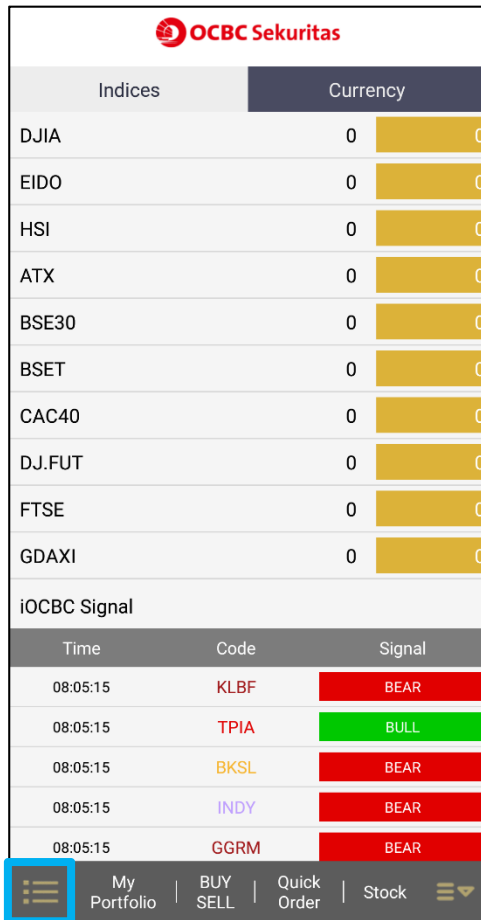
Version 1.0



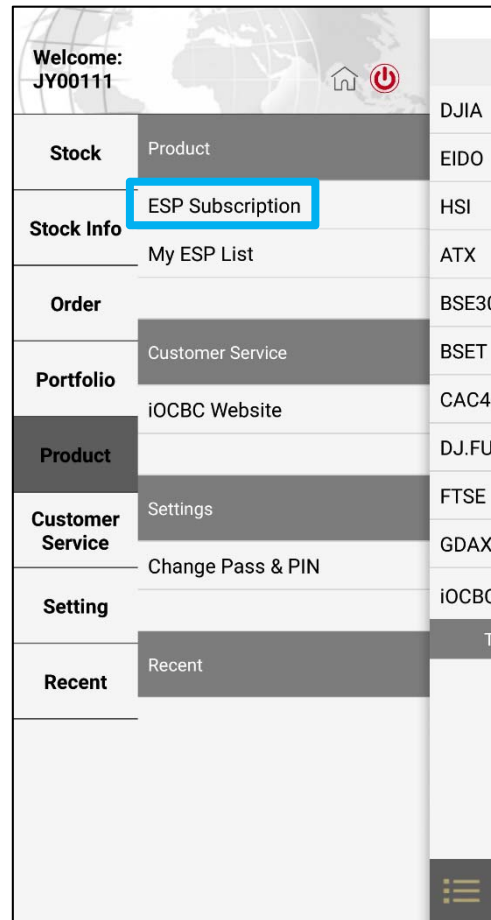
Google Play



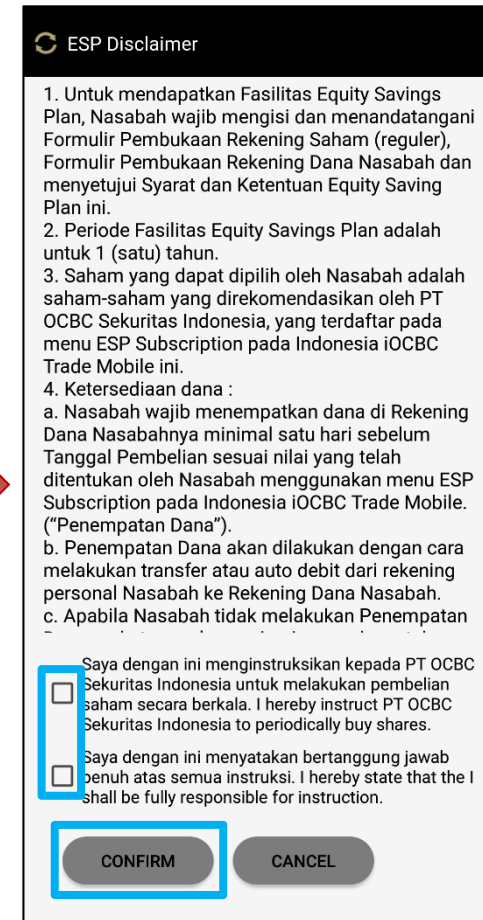
ESP ACCOUNT REGISTRATION



At Home Screen tap on the 3 stripe at the bottom left.



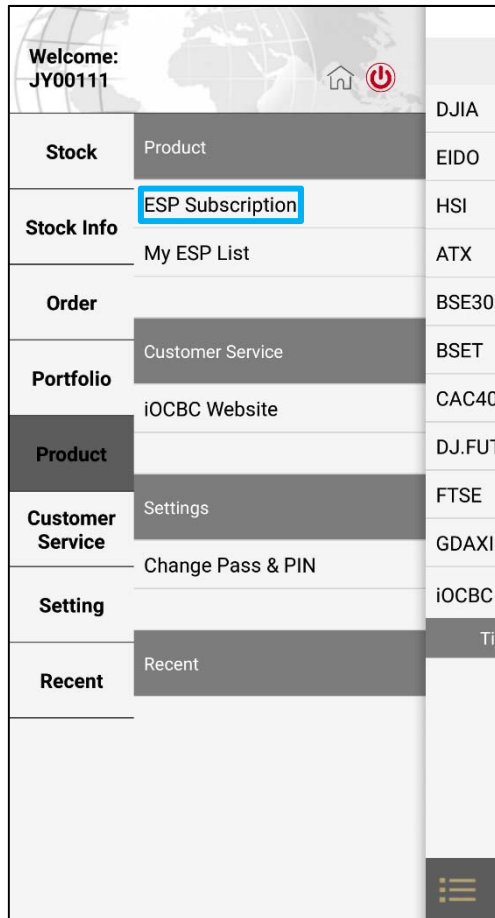
Go to "Product" and tap "ESP Subscription"



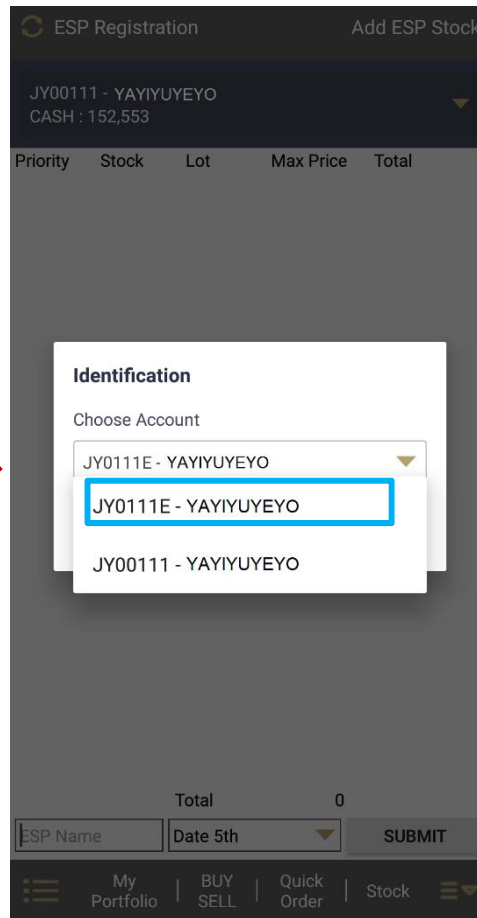
The following screen will show up if you don't have ESP Sub Account. Check the tick-box to agree and tap confirm. You will be contacted by our Customer Service.

HOW TO SUBSCRIBE FOR ESP?

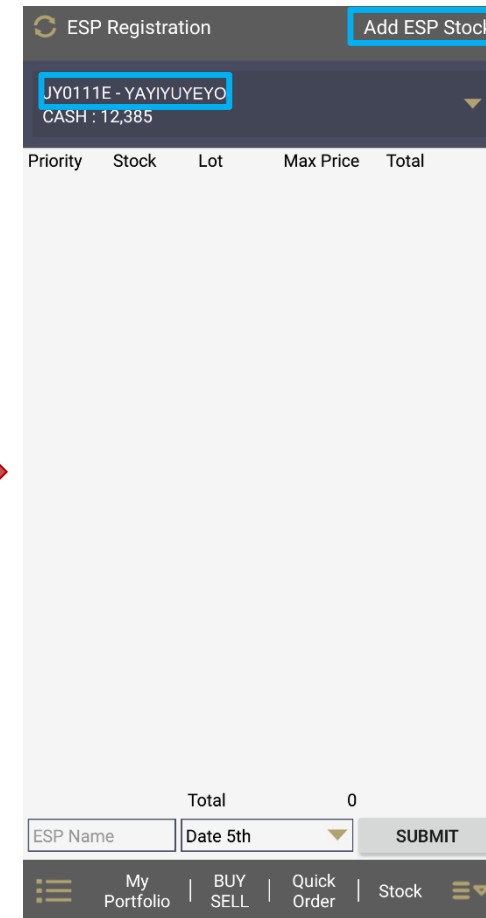
Select ESP Account



Go to "Product" and tap "ESP Subscription"



Tap on the Account, choose account name ending in "E" from the drop down list.



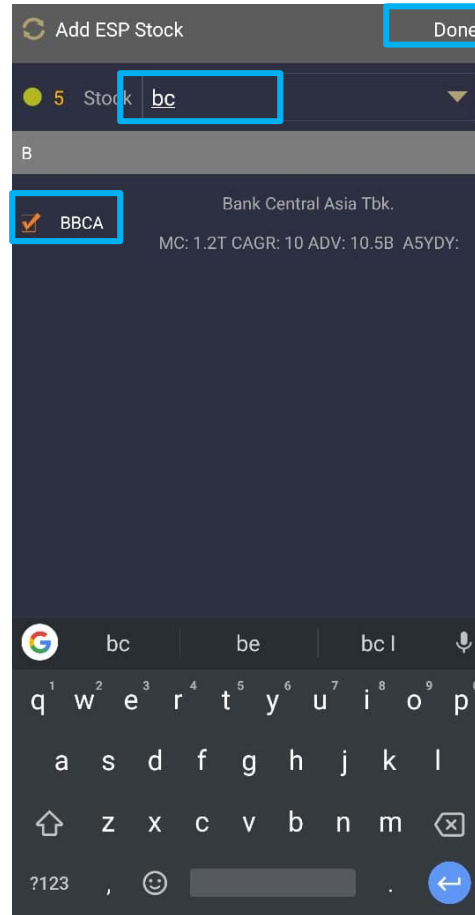
Ensure that the ESP Sub Account is selected then choose "Add ESP Stock"

HOW TO SUBSCRIBE FOR ESP (2)?

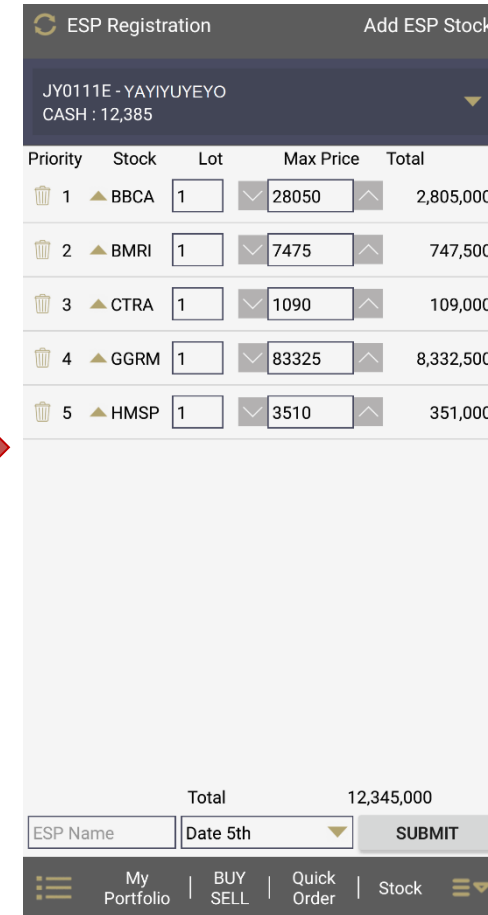
Choosing Stocks



Scroll and select stock by ticking on the check box.



Or search the stock name / ticker then tick the check box. Tap "Done" if you finished.



System shows the summary of the selected stocks. Adjust the order setting.

HOW TO SUBSCRIBE FOR ESP (3)?

Button Functions

1. Use the “trash bin” icon to remove stock.

2. Priority of the stocks execution. Use the arrow to adjust the priority

3. The stock’s ticker.

4. Adjust the number of lots to buy.

5. Put the name of your ESP here.

The screenshot shows the 'ESP Registration' screen with the following elements:

- Header:** 'ESP Registration' and 'Add ESP Stock'.
- Account Info:** 'JY0111E - YAIYUYEYO' and 'CASH : 12,385'.
- Table:**

Priority	Stock	Lot	Max Price	Total
1	BBCA	1	28050	2,805,000
2	BMRI	1	7475	747,500
3	CTRA	1	1090	109,000
4	GGF	1	83325	8,332,500
5	HMSP	1	3510	351,000
- Form Fields:**
 - ESP Name: [Empty]
 - Date: 5th
 - Total: 12,345,000
 - Buttons: SUBMIT, BUY SELL, Quick Order, Stock

6. Shows Last Price, use the “arrow up” and “arrow down” to adjust the maximum stock price that you can accept.

7. Shows the total amount per stock.

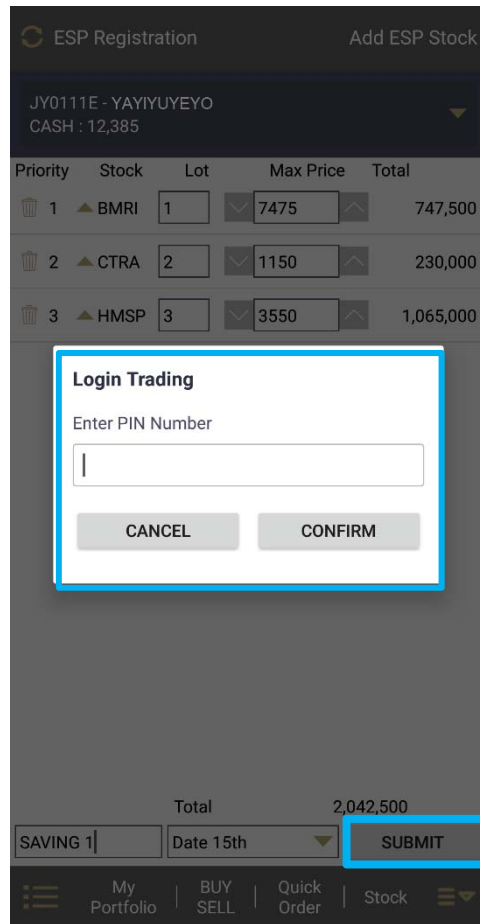
8. Use this function to change the execution date: 5,15,25.

9. Total order amount, should be deposited on T-1 execution date.

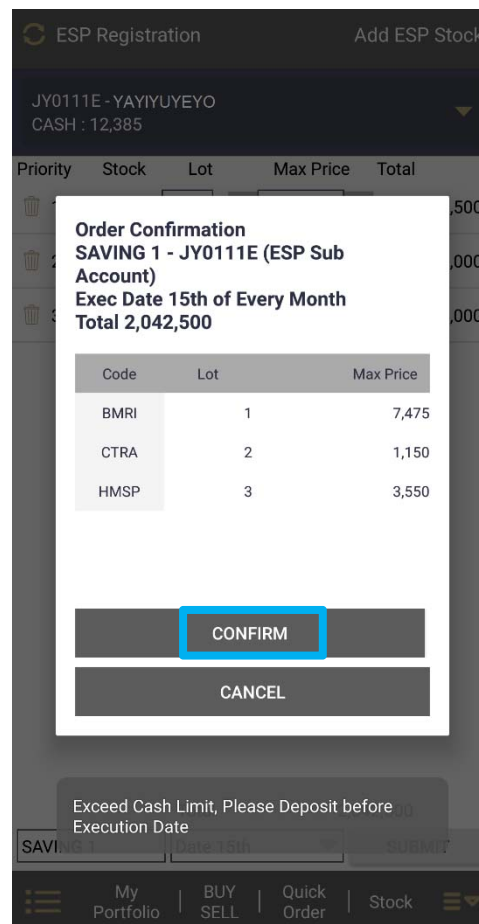
10. Submit ESP Orders.

HOW TO SUBSCRIBE FOR ESP (4)?

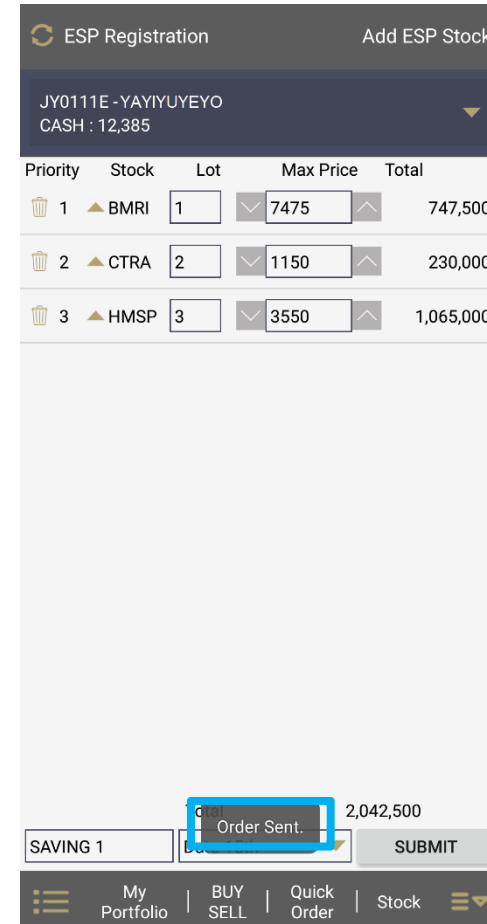
Confirmation Page



Click Submit, Input Login Trading, then click Submit again.



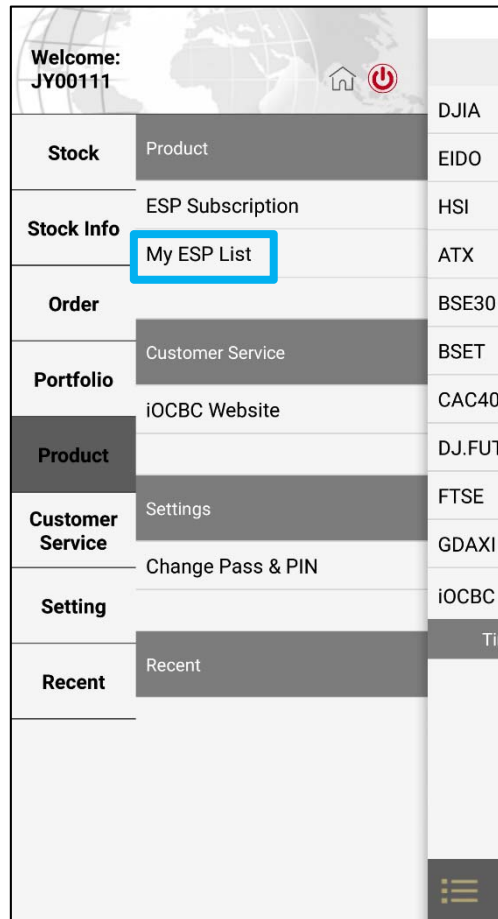
System shows confirmation page, check the details, then tap confirm. System will give you warning if your balance is insufficient.



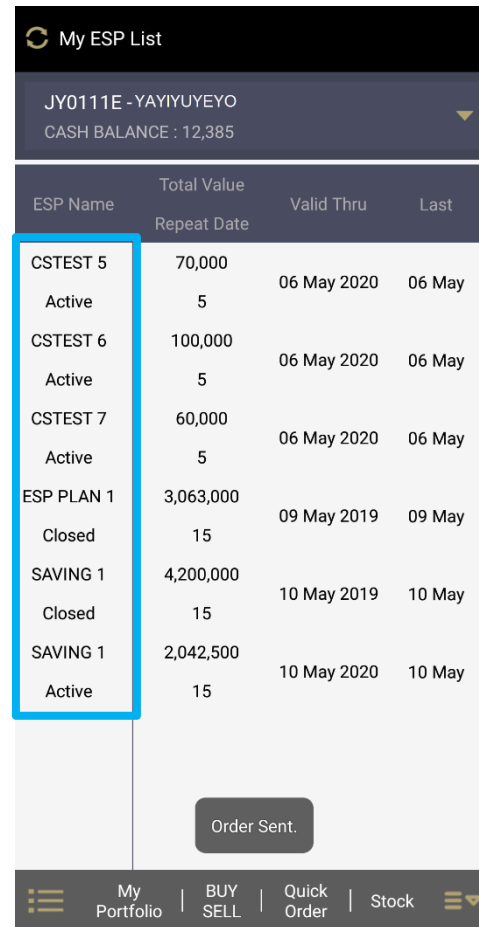
System will show notification: "Order Sent".

HOW TO CHECK ESP SUBSCRIPTION?

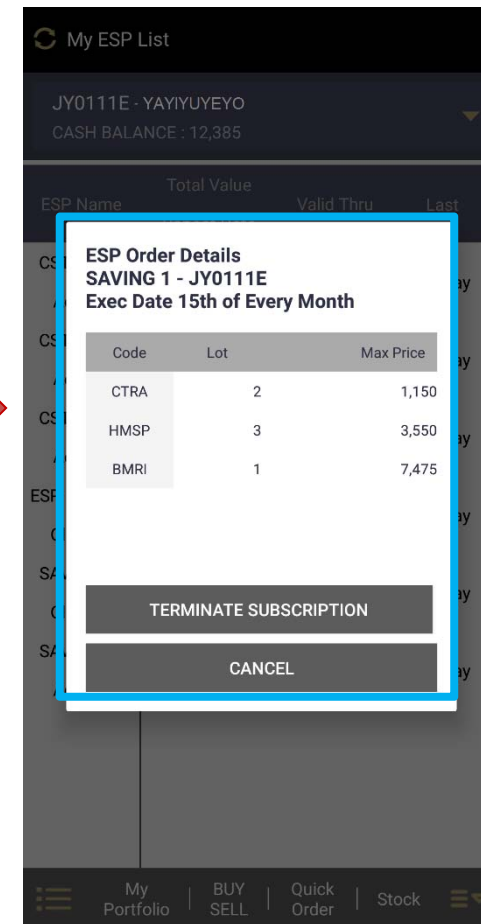
Check ESP Subscription



Go to "Product" and choose "My ESP List"



You can see all ESP Subscription and the active / closed status.



Check the detail of the ESP by clicking the ESP Name. Also use this feature to terminate your subscription.



Thank You

T (6221) 2970 9300 | F (6221) 2970 9393 | www.ocbcsekuritas.com

Important Notes

Trading in securities involves a number of risks, and you may lose all or more than the amount invested or deposited. Please seek advice from an independent financial and/or legal advisers regarding the suitability of any trade or investment product taking into account your investment objectives before making a commitment to trade or purchase any investment product. You should therefore consider carefully and exercise caution in making any trading decision whether or not you have received advice from any professional including your financial and/or legal advisers.